

## 1 Hitachi ID Identity Manager



**Managing the User Lifecycle  
Across On-Premises and  
Cloud-Hosted Applications**

*User provisioning, RBAC, SoD and access certification.*

## 2 HiIM Work-Flow Demonstration

Example use cases of the Hitachi ID Identity Manager work-flow engine, and a description of the unique approach to configuring and maintaining a dynamic work-flow system.

### 3 HiIM Dynamic Workflow

The Hitachi ID Identity Manager workflow engine implements a single process for entering, validating, approving and executing change requests:

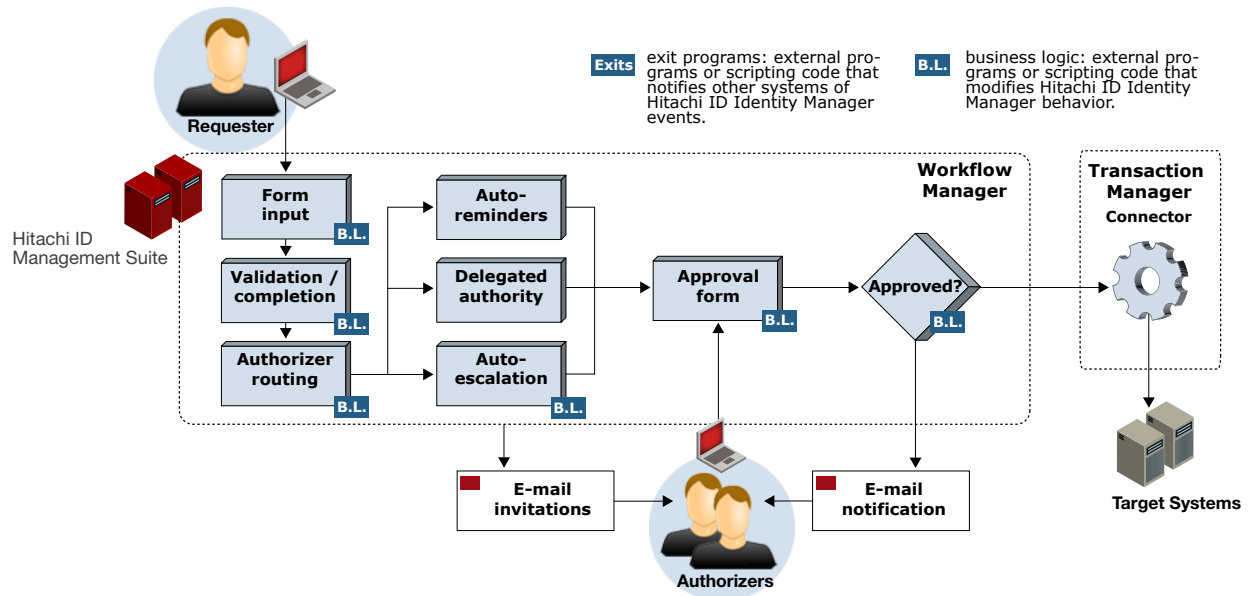
---

<b><i>Contents of a change request:</i></b>	<ul style="list-style-type: none"> <li>• Create user profile, login accounts.</li> <li>• Enable, disable login account.</li> <li>• Move, rename user object.</li> <li>• Change attributes.</li> </ul>
<b><i>Global business logic:</i></b>	<ul style="list-style-type: none"> <li>• Validate, set profile attributes.</li> <li>• Filter, attach, remove resources.</li> <li>• Manage unique IDs, e-mail addresses, etc.</li> <li>• Authorizer routing, reminders, escalation, delegation.</li> </ul>
<b><i>Inputs, outputs:</i></b>	<ul style="list-style-type: none"> <li>• Inputs: self-service requests, automated processes, SOAP API.</li> <li>• Outputs: e-mails to users, help desk tickets, run connectors.</li> </ul>

---

Consolidating the workflow process significantly reduces initial implementation and ongoing support costs.

## 4 Dynamic Workflow



## 5 New user provisioning process

The following animations illustrate a basic use of the work-flow system: a manager entering a change request to provision a new user, and subsequent authorization and action to fulfill that request.

## 6 Automatic provisioning (scheduled batch process)

Animation: [../pics/camtasia/r6-workflow/6-Request-new-employee/6-Request-new-employee.cam](http://pics/camtasia/r6-workflow/6-Request-new-employee/6-Request-new-employee.cam)

## 7 Fill in a form: request access for a new contractor

Animation: [../pics/camtasia/r6-workflow/1-request-new-user/1-request-new-user.cam](http://pics/camtasia/r6-workflow/1-request-new-user/1-request-new-user.cam)

## 8 Check status of an open request

Animation: ../pics/camtasia/r6-workflow/2-Review-Request/2-Review-Request.cam

## 9 Authorization process using E-mail invitations and web approval

Animation: ../pics/camtasia/r6-workflow/4-Authorize-Review-request/4-Authorize-Review-request.cam

## 10 Reports – users and accounts

Animation: ../pics/camtasia/r6-workflow/reports-users-accounts/reports-users-accounts.cam

## 11 Reports – orphan and dormant accounts

Animation: ../pics/camtasia/r6-workflow/reports-orphan-accounts/reports-orphan-accounts.cam

## 12 Reports – violations of segregation of duties rules

Animation: ../pics/camtasia/r6-workflow/reports-violations-sod-rules/reports-violations-sod-rules.cam

## 13 Reports – detailed change history

Animation: ../pics/camtasia/r6-workflow/reports-detailed-change-history/reports-detailed-change-history.cam

## 14 Summary

- From a user's perspective, dynamic work-flow looks just like traditional work-flow systems.
- Internally, dynamic work-flow is orders of magnitude simpler to install, configure and manage.
- Simplified administration is the difference between pilot installations and enterprise deployments.
- Hitachi ID Group Manager further simplifies both the user experience and administrative effort for a special class of work-flow transaction: new users asking for new security entitlements.